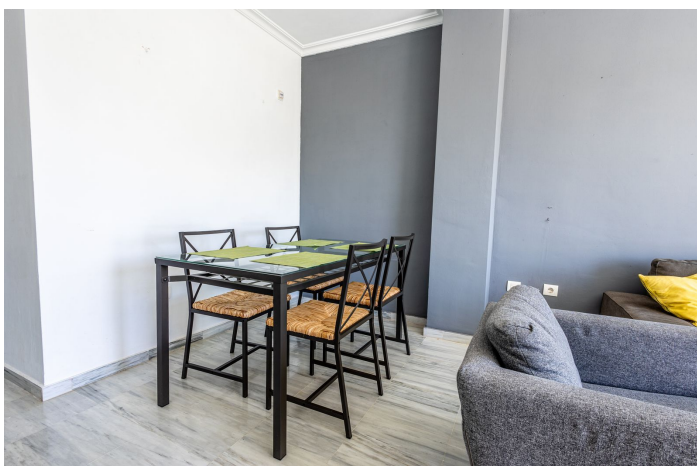


Apartamento en Planta Última en venta en Alhaurín el Grande, Alhaurín el Grande

255.000 €

Referencia: R4827409 Dormitorios: 2 Baños: 2 Construido: 105m² Terraza: 6m²





info@delsolstates.com

+34 691 890 756

Valle del Guadalhorce, Alhaurín el Grande

LOVELY TOP FLOOR APARTMENT

A must-see, top floor apartment that provides a true front line golf experience. This lovely property offers two bedrooms, two bathrooms, a recently reformed large kitchen and open plan living and dining room.

The apartment itself feels larger than its size, is light, airy and provides a myriad of fantastic mountain, national park, and golf views. Both bedrooms are of a generous size as are the kitchen and lounge. The primary ensuite bathroom is large and spacious. The off-lounge terrace whilst compact is extremely practical and is very usable, with fabulous, front-line golf, mountain and forest views.

This apartment is in arguably the best building the community has to offer. Looking attractive and feeling both personal and secure. The apartment offers privacy and will satisfy those looking for peace and serenity. There is secure underground parking and lift access to the apartment. Compared to many apartment complexes, this building offers a premium and high-end feel.

The opportunity to purchase a property in this building and especially on the top floor seldom comes available and will suit those looking for an investment, long-term rental income, as a lock-up and leave holiday home or for permanent living.

The Pueblo Andaluz urbanization is highly regarded as being one of the, if not the best communities and boasts a resort like swimming pool with waterfall and beautiful gardens.

Alhaurin Golf is well placed for Mijas, La Cala, Fuengirola, Malaga Airport, Marbella and beyond. There are several beaches and golf courses within a 20-minute drive and an extensive number of restaurants in the local vicinity. Alhaurin Golf itself was designed by Severiano Ballesteros and is deemed a true test of a golf.

We recommend a visit to the property to take in the views and privacy afforded by this property.

Características:

Características

Ascensor
Cerca de Transporte
Terraza Privada
Baño En-Suite
Suelos de Mármol
Doble acristalamiento
Armarios Empotrados

Vistas

Vistas a Montaña
Vistas Panorámicas
Vistas al Campo
Vistas a Jardín
Vistas a Golf
Vistas a Bosques

Piscina

Piscina Comunitaria

Jardín

Jardín Comunitario
Jardín Paisajístico

Servicios Públicos

Electricidad
Agua Potable

CO2 Emission Rating

D

Orientación

Sur
Orientación Sureste
Orientación Suroeste

Posición

Urbanización
Primera línea de Golf
Campo
Pueblo de Montaña
Cerca de los Bosques

Muebles

Sin Amueblar

Seguridad

Portero Automático

Categoría

Casas de vacaciones
Inversion
Golf
Reventa

Climatización

Aire Acondicionado
Calefacción Central.

Estado

Buen estado de conservación

Cocina

Cocina Equipada

Aparcamiento

Parking Subterráneo
Garaje
Parking Comunitario
Calificación energética
E