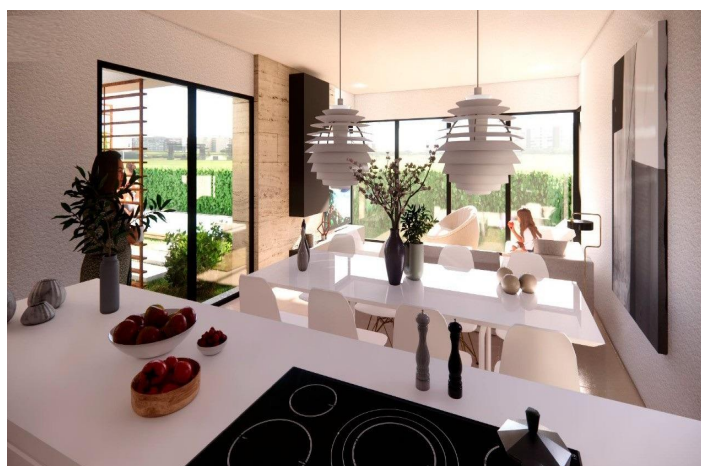
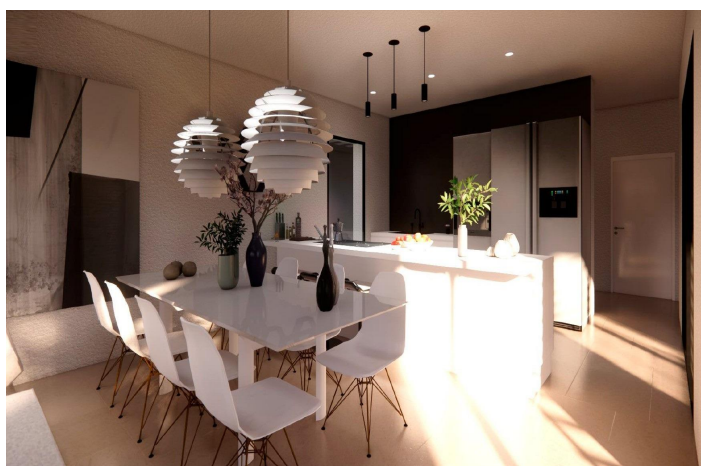
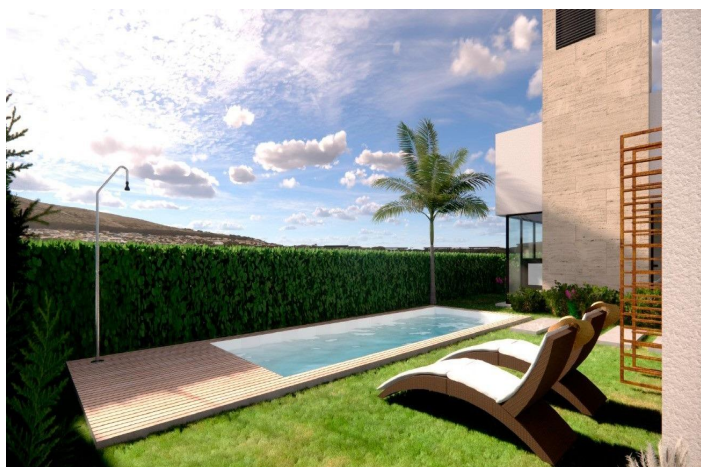




## Detached Villa for sale in Torre Pacheco, Torre Pacheco

820,000 €

Reference: N8148   Bedrooms: 3   Bathrooms: 3   Plot Size: 406m<sup>2</sup>   Build Size: 284m<sup>2</sup>   Terrace: 143m<sup>2</sup>





## Mar Menor, Torre Pacheco

NEW BUILD VILLAS IN PRIVATE GATED RESORT IN PROVINCE OF MURCIA New Build villas in private gated resort in the Murcia region, surrounded by excellent golf courses and just 10 minutes from the sandy beaches of the Mar Menor Sea. This exclusive project consists of 4 independent villas with 3 bedrooms and 3 bathrooms on one floor, with private swimming pool 3 x 7, open plan basement with light and ventilation through an English patio and large solarium on a plot of 400 m2 approx. The properties have fully equipped kitchens and bathrooms and pre-installation of air conditioning ducts. Located in a private gated resort, with a main access entrance and 24 hours security. The resort is designed around an impressive 126.000 m2 green area. It comprises walking and cycling paths, sport facilities, paddle and tennis courts, a mini-golf course, gardens, dog parks, leisure areas, clubhouse.... Also in the central area is the jewel of the resort, a crystal-clear artificial lake of almost 17.000m2 of water surface, surrounded by white sandy beaches and palm trees, bringing a piece of the Caribbean to the Murcia Region. There are 2 islands in the lake, one of them has its own bar, there are also "beach Chiringuitos" spread around the lake. The resort is strategically located less than 4 km from the beach and the town of Los Alcázares, where you can practice various water sports, surrounded by several golf courses and the city of Cartagena less than 15 minutes by car and 22 km from Murcia airport, therefore having a wide cultural, gastronomic and sports offer within reach.



## Features:

### Features

Gated  
Private Pool  
Under-Build / Basement  
Near Commercial Center  
Solarium: Yes  
Beach: 5000 Meters  
Number of Parking Spaces: 1  
Garden  
Double Bedrooms: 3  
Near Schools  
Terrace: 143 Msq.  
Location: Urbanisation  
Air Conditioning: Pre-Installed  
Useable Build Space: 140 Msq.

### Energy Rating

B

### CO2 Emission Rating

B