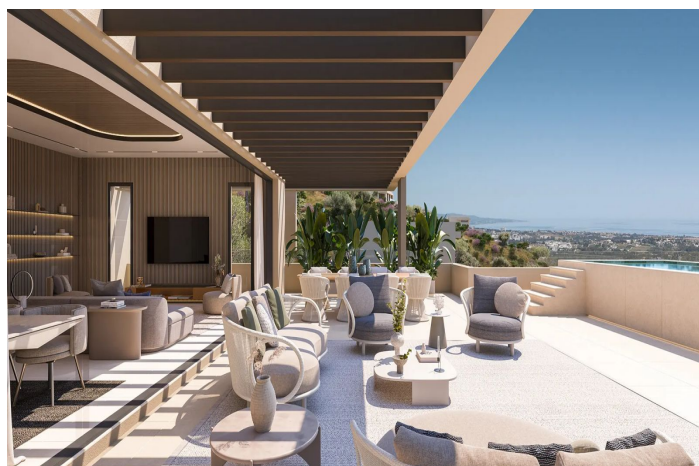




Ground Floor Apartment for sale in Benahavís, Benahavís

2,400,000 -
2,900,000 €

Reference: R5015353 Bedrooms: 3 - 4 Bathrooms: 3 - 4 Build Size: 331m² - 337m² Terrace: 128m² - 166m²





Costa del Sol, Benahavís

Positioned in an idyllic setting near Marbella, these sky villas represent the newest chapter. This innovative development merges the spaciousness of a traditional villa with the convenience and security often found in high-end apartment residences. Each property has been carefully crafted to maximise privacy, providing sweeping sea views from expansive terraces and light-filled interiors. Whether you desire a serene sanctuary or a stylish venue for entertaining, the sky villas promise modern luxury in a truly privileged setting. **EXCLUSIVE DESIGN AND LAYOUTS** The sky villas at this project form part of six boutique buildings, each strategically oriented to capture the region's stunning vistas. Buildings 01 to 05 (Type 01) offer three individual sky villas apiece, while Building 06 (Type 02) contains two remarkable homes. Every residence spans one or two entire floors, affording a sense of space seldom found in conventional apartments. This architectural approach not only guarantees uninterrupted views but also allows private lift access straight to your home from your personal garage. **PREMIUM SPECIFICATIONS AND FINISHES** Every sky villa boasts high-quality materials and meticulous craftsmanship. While each home is already finished to exceptional standards, owners may select from a curated range of finishes to reflect their personal tastes. An optional pool on the terrace further enhances the sense of luxury. Additionally, each property is equipped with its own secure garage and private lift access, elevating both convenience and exclusivity.



Features:

Features

Covered Terrace
Lift
Ensuite Bathroom
Double Glazing
Fitted Wardrobes
Utility Room

Setting

Close To Golf
Close To Town

Kitchen

Fully Fitted
Kitchen-Lounge

Parking

Garage
Private

Climate Control

Cold A/C
Hot A/C
U/F/H Bathrooms

Condition

New Construction

Garden

Communal
Landscaped

Category

New Development

Views

Sea
Mountain
Panoramic
Pool

Pool

Communal

Security

Gated Complex
Entry Phone