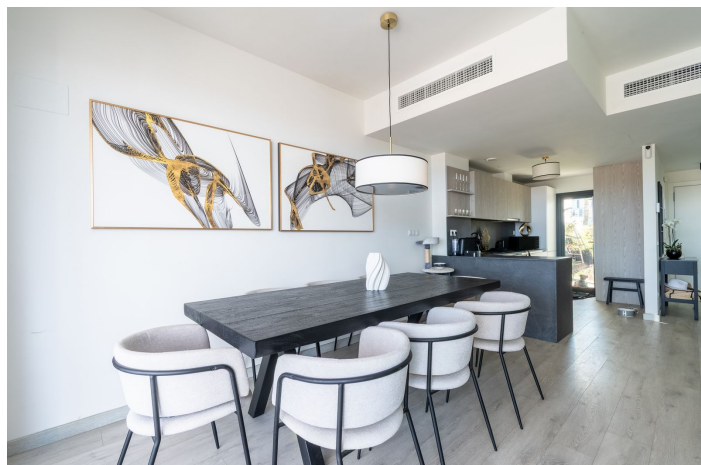




Semi-Detached House for sale in Manilva, Manilva

875,000 €

Reference: R5005114 Bedrooms: 3 Bathrooms: 3 Plot Size: 118m² Build Size: 256m² Terrace: 120m²





Costa del Sol, Manilva

Beautiful 3-bedroom semi-detached house located in the popular Bahía de las Rocas area of Manilva, offering a stunning south facing aspect and modern open plan living. Inside, the property is tastefully decorated with quality finishes and is designed for everyday living. One of the highlights of this home is the amazing panoramic view of the Mediterranean Sea, Gibraltar, and even the northern coast of Africa. It's also close to the beach, golf courses, schools, shops, restaurants, and the nearby towns and Marina's of Sotogrande and La Duquesa. The house is spread over four levels. The main floor has a bright living room and an open plan kitchen, both with sea views and access to a private patio and garden. Upstairs, the first floor includes a master bedroom with a terrace and sea views, two more bedrooms with built-in wardrobes, and two bathrooms, one of which is en-suite. At the top of the house, there's a rooftop terrace with a jacuzzi and space to relax or entertain while enjoying the view. The basement is flexible and can be turned into a home gym, extra storage, or a playroom. Outside, there's a private garden of around 118 square meters. The home is fully furnished and includes high-quality appliances and features. It's move-in ready and perfect for anyone looking for a main home or a holiday residence by the sea. The gated community offers shared facilities including swimming pools, a paddle tennis court, and a children's play area, making it ideal for families and anyone looking for a relaxed, easy lifestyle.



Features:

Features

Covered Terrace
Near Transport
Private Terrace
Ensuite Bathroom
Fitted Wardrobes
Paddle Tennis
Utility Room
Jacuzzi
Basement
Fiber Optic

Views

Sea
Panoramic
Garden

Pool

Communal

Garden

Communal
Private
Landscaped

Utilities

Electricity
Drinkable Water

Orientation

South West

Setting

Urbanisation
Close To Town
Close To Schools

Furniture

Optional

Security

Gated Complex
Entry Phone

Category

Holiday Homes
Golf
Resale
Contemporary

Climate Control

Air Conditioning
Cold A/C
Hot A/C

Condition

Excellent

Kitchen

Fully Fitted

Parking

Underground