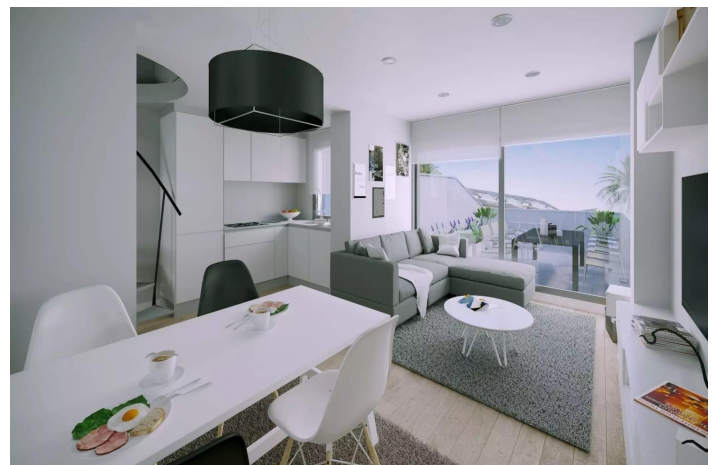


## Penthouse for sale in Fuengirola, Fuengirola

299,000 €

Reference: SP0670 Bedrooms: 3 Bathrooms: 2 Build Size: 120m<sup>2</sup> Terrace: 20m<sup>2</sup>



## Costa del Sol, Fuengirola

### NEW BUILD RESIDENTIAL COMPLEX NEAR FUENGIROLA

New Build Residential complex is characterised by its ample spaces that offer maximum comfort and quality of life. Fantastic communal areas with tropical gardens and swimming pools to enjoy every day of the year.

Complex offers everything you need so that you don't have to leave your Residential Resort, leisure, sports, multipurpose spaces. All the comfort and leisure that will improve your quality of life.

The concept of this residential complex has been studied in detail, to offer all the facilities that accompany our lifestyle. Modern facilities, top quality, spacious terraces and excellent communal areas that invite you to enjoy the authentic Mediterranean lifestyle. Accompanied by the best construction materials and qualities, which will make this a unique project that will live up to your expectations.

The kitchen is delivered with base units and worktop. Electrical appliances include extractor hood, ceramic hob, sink and tap.

Private urbanisation with security checkpoint and access control. The interior urbanisation has 3 outdoor swimming pools, green areas with solarium for parasols and sun loungers with corners to relax and enjoy. Landscaping with native species with low water consumption. Wellness area, sauna, toilets and changing rooms. Social area with convenience store with basic necessities. Gymnasium.

New Build residential complex located in Cortijo Torreblanca, near Fuengirola, in the heart of the Costa del Sol. It is a city in constant movement, its wide variety of leisure and cultural options make it a perfect city to live in. The place to grow up and enjoy with your loved ones.

## Features:

### Features

Gym  
Gated  
Communal Pool  
Location: Coastal, Urbanisation  
Near Commercial Center  
Solarium: Yes  
Elevator/Lift  
Near Bus Route  
Number of Parking Spaces: 1  
Terrace: 20 Msq.  
Useable Build Space: 75 Msq.  
Double Bedrooms: 3  
Near Schools  
Beach: 2000 Meters  
Air Conditioning: Pre-Installed

### Energy Rating

B

### CO2 Emission Rating

B