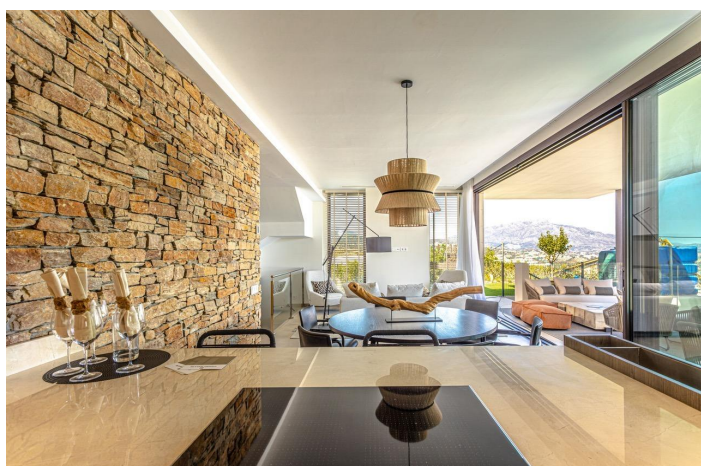




## Detached Villa for sale in Benahavís, Benahavís

1.890.000 €

Referenz: SP0386 Schlafzimmer: 4 Badezimmer: 3 Grundstücksgröße: 512m<sup>2</sup> Garten: 326m<sup>2</sup> Terrasse: 242m<sup>2</sup>





---

## Costa del Sol, Benahavís

### EXCLUSIVE ECO-FRIENDLY LUXURY VILLAS ON THE COSTA DEL SOL

13 exclusive luxury villas, ecological and in contact with nature. With fully equipped kitchen, home automation, solarium, garage, basement, and sea and mountain views.

Gated community: more than 5,000 m2 of green spaces made up of Mediterranean gardens with pergolas, swimming pools and terraces. 500 m2 of swimming pools, ponds, co-living area, rest and relaxation areas, viewpoints and a natural oasis surrounded by woods, fruit trees and flowers.

With a relaxed and elegant clubhouse, plus private organic vegetable gardens within the communal gardens tended by the community's own gardeners, the natural produce of which will be delivered to residents.

Halfway between Malaga and Gibraltar airports, both accessible in just over 40 minutes by car. Surrounded by the best golf courses on the Costa del Sol. Situated just 10 minutes drive from the beach, with its beach bars and distinguished clubs, and the same distance from Puerto Banús, one of the most exclusive places on the Mediterranean coast, where you will find luxury shops, elegant restaurants and one of the most famous marinas in Europe, where the most exclusive yachts moor.

Of all the Mediterranean coastline, the beaches, towns and golf courses of the Costa del Sol are the only ones where you can enjoy more than 320 days of sunshine a year and an average annual temperature of 20° Celsius. A place to enjoy the true Mediterranean lifestyle.



## Eigenschaften:

### Merkmale

Gated  
Private Pool  
Communal Pool  
Under-Build / Basement  
Terrace: 242 Msq.  
WC: 1  
Key Ready  
Near Commercial Center  
Double Bedrooms: 4  
Solarium: Yes  
Elevator/Lift  
Number of Parking Spaces: 2  
Near Trees  
Air Conditioning: Yes  
Views: Sea  
Near Golf / Golf Resort Property  
Double Garage  
Garden  
Near Schools  
Useable Build Space: 300 Msq.  
Location: Coastal, Mountain  
Beach: 4500 Meters

### Energiebewertung

B

### CO2 -Emissionsbewertung

B