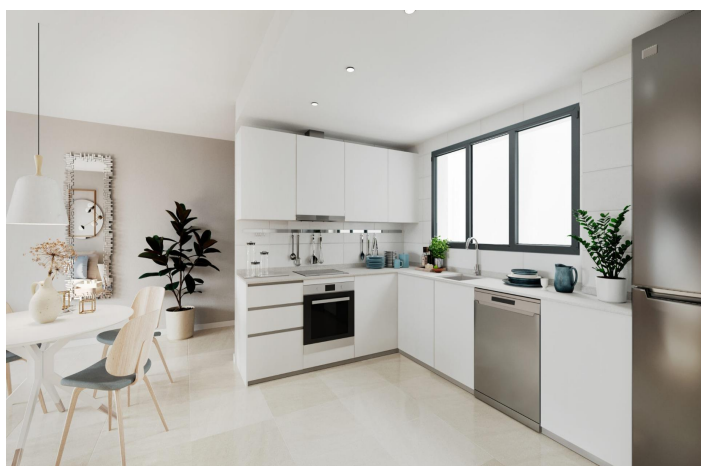




## Penthouse for sale in Estepona, Estepona

390.000 €

Referenz: SP0736    Schlafzimmer: 2    Badezimmer: 2    Garten: 133m<sup>2</sup>    Terrasse: 60m<sup>2</sup>





---

## Costa del Sol, Estepona

**NEW BUILD RESIDENTIAL COMPLEX NEAR ESTEPONA GOLF** New Build an exclusive residential development close to Estepona Golf, comprising 72 homes with options of duplex penthouses and ground floor apartments with garden. In addition, the complex has parking spaces and parking for buggies in the basement for golf lovers. In order to offer you functionality through optimum energy efficiency, the homes have an individualised aerothermal system for domestic hot water and hot/cold air-conditioning by means of ducts with grilles. The kitchen comes furnished and equipped with electrical appliances: electric oven, induction hob, extractor hood, refrigerator and dishwasher. New Build development designed and conceived to offer maximum comfort and convenience, therefore, among the magnificent communal areas you will find activities that will make your day to day life more pleasant such as the swimming pool, coworking area or the chill out terrace. Residential complex located in unique surroundings, less than 2 km from the beach and with stunning panoramic views of the coastline. A perfect place to enjoy the tranquillity, while you can access a wide range of outdoor sports activities, thanks to its proximity to the Estepona Golf courses and its spectacular beaches. Estepona Golf is an 18-hole course situated between Gibraltar and Puerto Banús; on the new golden mile, just 3 km from the beach and with a wide variety of services and facilities on offer locally. Estepona Golf is well connected with good road access and is just 20 minutes from Marbella and 60 minutes from Malaga Airport along the A7 motorway, it is also only a 40-minute drive from Gibraltar International Airport.



## Eigenschaften:

### Merkmale

Double Bedrooms: 2

Gated

Communal Pool

Location: Coastal, Urbanisation

Near Commercial Center

Solarium: Yes

Elevator/Lift

Views: Sea

Number of Parking Spaces: 1

Near Golf / Golf Resort Property

Near Schools

Useable Build Space: 89 Msq.

Air Conditioning: Pre-Installed

Beach: 1700 Meters

Terrace: 60 Msq.

### Energiebewertung

B

### CO2 -Emissionsbewertung

B