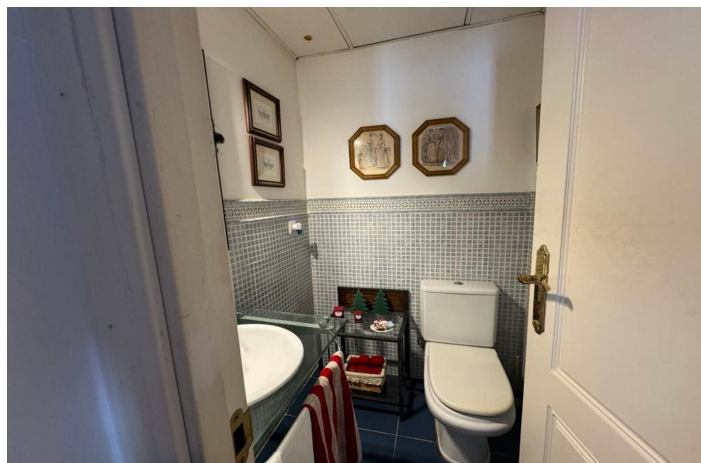




## Adosada en venta en Nueva Andalucía, Marbella

800.000 €

Referencia: R4599370    Dormitorios: 4    Baños: 4    Construido: 145m<sup>2</sup>    Terraza: 30m<sup>2</sup>





---

## Costa del Sol, Nueva Andalucía

Welcome to this Andalusian duplex-style townhouse, located next to the golf course in the sought-after area of Aloha, in the La Retranca urbanization next to Aloha College and all services, in addition to being very close to the sea and Puerto Banus. Here you will find an ideal location close to amenities and everything you need for a comfortable lifestyle. This semi-detached house is distributed over two floors and offers the following fantastic distribution: On the upper floor you will find four large bedrooms and three bathrooms that function perfectly. This is a perfect solution for families or for those who want additional space for guests or working from home. Here you can find everything you need for a comfortable and harmonious daily life. The large open floor plan for the living room and dining room exudes light and space. The upper terrace is something really extra, with an integrated barbecue and lounge area. Here you can enjoy moments of relaxation and wonderful outdoor dinners. Sliding doors create a smooth transition between inside and outside, creating an atmosphere of freedom and openness. On the lower floor you have access to a terrace with a garden area. This terrace can be accessed from both ground floor bedrooms and offers a quiet place to enjoy the green surroundings and mild climate. This townhouse is truly a gem and has everything you need for a comfortable and harmonious lifestyle. If you are looking for a home where you can enjoy and have access to the golf course and nearby amenities, this is the place for you. Contact us today to book a viewing and experience for yourself everything this fantastic home has to offer. Available now exclusive for long term rent or sale.



## Características:

### Características

Terraza Cubierta  
Baño En-Suite  
Armarios Empotrados  
Apptmnt. Huéspedes

### Vistas

Vistas al Mar  
Vistas a Montaña  
Vistas a Golf

### Piscina

Piscina Comunitaria

### Jardin

Jardín Comunitario

### Servicios Públicos

Electricidad

### Orientación

Sur

### Posición

Cerca de Golf  
Urbanización  
Cerca de Tiendas  
Cerca de Ciudad  
Cerca de Colegios  
Primera línea de Golf

### Muebles

Completamente Amueblada

### Seguridad

Alarma  
Persianas Eléctricas  
Portero Automático

### Categoría

Golf

### Climatización

Aire Acondicionado  
A/A Preinstalado  
A/A Frio  
A/A Caliente

### Estado

Excelente estado de conservación

### Cocina

Cocina Equipada

### Aparcamiento

Parking Privado  
Parking Cubierto