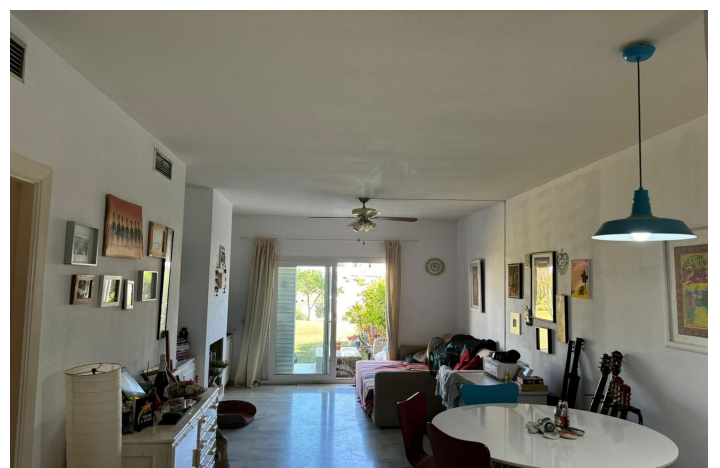


## Apartamento Planta Baja en venta en Aloha, Marbella

375.000 €

Referencia: R4832218    Dormitorios: 2    Baños: 2    Construido: 80m<sup>2</sup>    Terraza: 15m<sup>2</sup>



## Costa del Sol, Aloha

A rare opportunity to acquire a garden apartment located within one of Marbella's most exclusive gated communities. This private and secure residential community is located front line to the Aloha Golf course, and situated under two minutes walk to a selection of bars and fabulous restaurants in Aloha, and an 8 minute drive to Puerto Banus and the beach. The apartment briefly comprises; fitted kitchen and laundry room, two double bedrooms, two bathrooms, a good sized lounge and dining area which leads directly onto a fabulous terrace, flowing directly into the breathtaking community gardens, where you will find a well maintained Tennis Court and Paddle Tennis court, gymnasium, squash court, community lounge complete with free WiFi, and extensive gardens leading to a beautiful swimming pool, with breathtaking open views over the surrounding golf course and mountains. The apartment is also offered with an external and internal covered car parking space. Whilst this apartment is ready to move into now, the value could be dramatically increased if the apartment was renovated throughout, but is located in a fabulous location which is walking distance to absolutely everything you need on a day to day basis!

## Características:

### Características

Terraza Cubierta  
Cerca de Transporte  
Terraza Privada  
Baño En-Suite  
Suelos de Mármol  
Armarios Empotrados  
Gimnasio  
Pista de Tenis  
Lavadero

### Vistas

Vistas a Montaña  
Vistas a Jardín

### Piscina

Piscina Comunitaria

### Jardín

Jardín Comunitario

### Categoría

Casas de vacaciones  
Inversion  
Ganga  
Barato  
Golf

### Orientación

Orientación Noroeste

### Posición

Cerca de Golf  
Cerca de Puerto  
Cerca del Mar  
Cerca de Tiendas  
Cerca de Ciudad  
Cerca de Colegios  
Primera línea de Golf  
Cerca de Marina

### Muebles

Sin Amueblar

### Seguridad

Recinto Cerrado

### Climatización

Chimenea

### Estado

Regular estado de conservación

### Cocina

Cocina Equipada

### Aparcamiento

Párking Privado  
Párking Cubierto  
More Than One